

# Saskatchewan Equity Study Supplement 3



Figure 1. Proportion of single, divorced, widowed Saskatchewan residents by income quintile from 1976 to 2011 using data from the Survey of Labour and Income Dynamics.

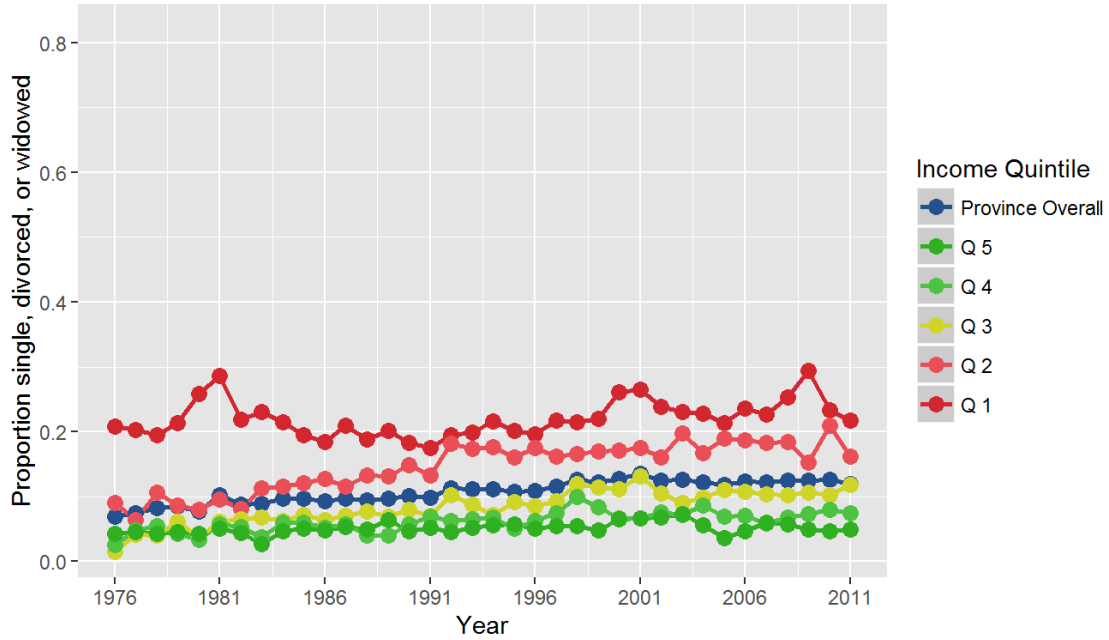


Figure 2. Proportion of Saskatchewan residents living alone by income quintile from 1976 to 2011 using data from the Survey of Labour and Income Dynamics.

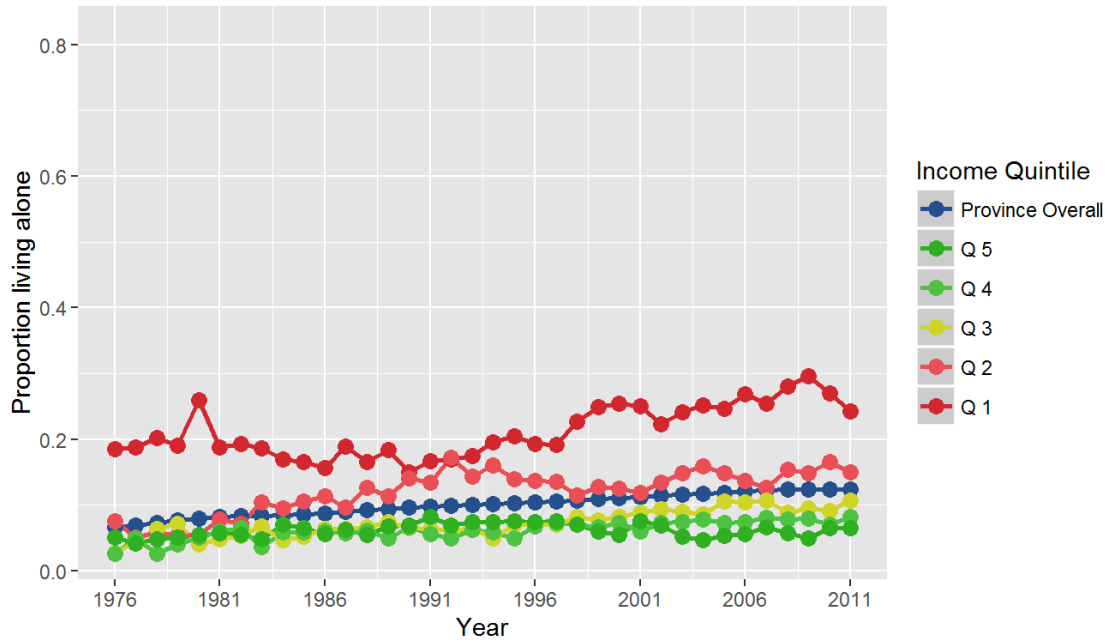


Figure 3. Proportion of single parent families in Saskatchewan by income quintile from 1976 to 2011 using data from the Survey of Labour and Income Dynamics.

